

## For Our Guests & Members

### Welcome!

To better serve our newcomers, we ask that guests please fill out a Visitor Card\* located in the pews in the sanctuary and at the Connection Center in Schumann Hall.

### First Connections

Find out what we stand for, why we do things the way we do, and meet the ministers. Anyone interested in becoming a member of First Protestant Church should contact Mae Kraft, Volunteer Coordinator, at X33 in the church office.

### Prayer Really Works

If you or someone you know needs prayer, please fill out a Prayer Request Card\* located in the pews in the sanctuary and at the Connection Center in Schumann Hall. (\*All info on Prayer & Visitor cards is kept confidential.)

If you would like to be added to the E-mail Prayer & Praise Chain to receive prayers, or would like to submit E-mail requests to pray, please contact [chuckaby@firstprotestant.com](mailto:chuckaby@firstprotestant.com).

### Care & Kindness Ministry

If you are a caregiver or care receiver and need help, call: FPC Caregiver Hotline (830) 837-8828.

### Parking Information

As a courtesy, we reserve the curbside parking on Coll Street by the sanctuary and the drive-thru parking area by the school for the elderly, handicapped, or those who require assistance. There is always an Ambassador there to greet and offer assistance. Also, we prohibit parking on the curbside by the Seele Building for the safety of the children going in and out of Kids' Connection.

### Media Outreach

All posters, flyers, or literature posted on the bulletin boards, Connection Centers, or distributed on church grounds must be approved by the church office. Requests for approval must be made by noon on Tuesdays to be posted by church staff on Fridays. Entries for the Sunday bulletin must also be submitted by noon on Tuesday for the upcoming Sunday.

### Nursery

A staffed nursery is provided for infants through 4-year-olds in the FP School area on Sunday mornings. Please see an usher for assistance.

### Closed Doors, Open Arms

It is necessary to keep doors in all FPC buildings closed so that our AC/Heating systems will work properly. Please don't let these closed doors make you think you are not welcome! Everyone is welcome to stay comfortable at FPC!

## Order of Worship

**Traditional Worship Service**  
**8:00am & 10:30am in the Sanctuary**  
**Rev. Chuck Huckaby**  
Minister of Congregational Life

**"How to Be an Effective Christian"**

### Order of Worship

**Prelude** "Prelude on MADRID" ~ Neil Harmon

Welcome

**(10:30) Choral Call to Worship** "Clap Your Hands"  
~ FPC Sanctuary Choir

**\*Hymn (#342)** "Come, Christians, Join to Sing"

**\*Sharing of Fellowship**

**\*Apostles' Creed**

I believe in God the Father Almighty, maker of heaven and earth, and in Jesus Christ, His only begotten Son, our Lord, who was conceived by the Holy Spirit, born of the Virgin Mary, suffered under Pontius Pilate, was crucified, dead and buried. He descended into hell; the third day He rose again from the dead; He ascended into heaven, and sitteth on the right hand of God the Father, Almighty; from thence he shall come to judge the living and the dead. I believe in the Holy Spirit, the One Holy Universal Christian Church, the communion of saints, the forgiveness of sins, the resurrection of the body and life everlasting. Amen

**\*Gloria Patri (#142)**

**Kids' Moment** Jill Rodriguez

**Service of Prayer**

**Scripture Reading** 2 Peter 1:1-11 (p. 860)

**Anthem** "Pie Jesu" ~ John Rutter  
FPC Sanctuary Choir ~ Erin English, soprano

**Message** Rev. Chuck Huckaby

**Tithes & Offerings**

**Offertory** "O Jesus, I Have Promised"  
~ Kenneth Lowenberg

**\*Praise (#382)** "Doxology"

**\*Prayer of Thanksgiving**

**Service of Communion**

(White grape juice is provided in the inner circles of the trays.)

**\*Hymn (#421)** "Lord, I Want to Be a Christian"

**\*Blessing**

**Postlude** "Toccata on WEDLOCK" ~ Gordon Young

\* indicates when those who are able may stand

## Staff Contact Information

**Rev. Daryl C. Higgins** Senior Minister  
[dhiggins@firstprotestant.com](mailto:dhiggins@firstprotestant.com)  
(830) 609-7729 ext. 16

**Rev. Phil Brown** Associate Minister  
[pbrown@firstprotestant.com](mailto:pbrown@firstprotestant.com)  
(830) 609-7729 ext. 20

**Rev. Chuck Huckaby**  
Minister of Congregational Life  
[chuckaby@firstprotestant.com](mailto:chuckaby@firstprotestant.com)  
(830) 609-7729 ext. 18

## Church Contact Information

### Address

172 West Coll Street  
New Braunfels, TX 78130

**Phone** (830) 609-7729

**Fax** (830) 609-1661

**Email** [office@firstprotestant.com](mailto:office@firstprotestant.com)

**Web** [firstprotestant.com](http://firstprotestant.com)

### Office Hours

Monday-Thursday 9am-4pm  
Fri 9am-3pm

Closed daily from noon-1pm

## This Sunday

Today's radio broadcast is given in loving memory of Harvey Isleib, by Ruby Lee Isleib & family.

Flowers on the altar are given to the honor and glory of God, by members and friends of First Protestant Church.

Rosebud on the altar is in honor of the February 1st birth of Autry Larie Canham to Kristin & Greg Canham, given by her great-grandmother, Marie Jarisch.

Prayer partners are available for personal prayer in the Prayer Room (behind the main pulpit) immediately following all services.

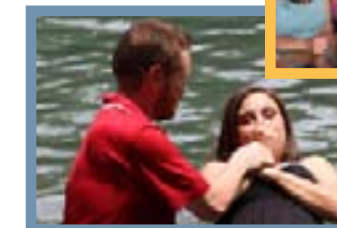


**FIRST PROTESTANT**  
CHURCH OF NEW BRAUNFELS

Sunday, February 5, 2012  
5TH SUNDAY AFTER EPIPHANY



Where Everybody is Somebody



and Jesus Christ is Lord

# A Week With FIRSTPROTESTANT

## Sunday 2.05.12

8:00am Traditional Service-Sanctuary  
 8:30am Breakfast-Schumann Hall  
 9:00am Children's Sunday School - Seele  
 9:15am Team FPC Middle & SrHi-Bormann Room  
 9:15am Adult Connection Classes - Conference Room, Mornhinweg Center, Seele Lounge  
 10:15am Kids' Connection - Seele  
 10:30am Traditional Service-Sanctuary  
 10:30am Contemporary Service - Schumann Hall

## Monday 2.06.12

1:30pm CWCC Planning Mtg - Mornhinweg Center  
 6:00pm Flying Fingers- Mornhinweg Center

## Tuesday 2.07.12

10:00am Women's Bible Study - Mornhinweg Center  
 11:30am Ladies' Lunch Bunch - Montana Mike's  
 6:00pm Moms in Prayer - Mornhinweg Center  
 6:30pm Eating for Health - Mornhinweg Center

## Wednesday 2.08.12

11:30am "Not Over the Hill Yet" Gang - Golden Corral  
 5:15pm Youth Fellowship - Bormann Room  
 6:00pm Bell Choir - Bell Choir Room  
 6:30pm Eating for Health - Mornhinweg Center  
 7:00pm WOW Bible Study - Mornhinweg Center  
 7:00pm Group Bible Study - Mornhinweg Center  
 7:00pm Sanctuary Choir Practice - Choir Room

## Thursday 2.09.12

noon Moms in Prayer - Mornhinweg Center  
 7:00pm WOW Bible Study - Mornhinweg Center

## Next Sunday 2.12.12

8:00am Traditional Service-Sanctuary  
 8:30am Breakfast-Schumann Hall  
 9:00am Children's Sunday School - Seele  
 9:15am Team FPC Middle & SrHi-Bormann Room  
 9:15am Adult Connection Classes - Conference Room, Mornhinweg Center, Seele Lounge  
 10:15am Kids' Connection - Seele  
 10:30am Traditional Service-Sanctuary  
 10:30am Contemporary Service - Schumann Hall  
 11:45am WYNNE RECEPTION - Schumann Hall  
 6:00pm DINNER THEATER - Schumann Hall

**Traditional Worship - Rev. Daryl Higgins**  
 "Searching For Jesus" Mark 1:29-39

**Contemporary Worship - Rev. Phil Brown**

## Wynne Reception

Join us after 10:30 worship on **Sunday, February 12th** for a light reception in honor of Bob Wynne's retirement from FPC. Bob & Lizanne have already hit the "RV trail" and will be returning for the reception before leaving Texas highways. A card basket will be available at the reception for those wishing to give travel gift cards or a simple thank you to the Wynnes for their years of service.



## Lenten Study Begins Feb 22nd

**Begins Ash Wednesday, February 22**  
 Continues on  
**Wednesdays at 7pm in Schumann Hall**

### "Recovering from Churchism: How to Renew, Grow, & Celebrate Your Church"

Successful church planter and pastor Lew Vander Meer explains how to cast a vision for growth, identify the people God is already calling and equipping to carry out the vision, and avoid bureaucracy, burnout, and conflict.

**Books NOW available in the church corridor on  
 Sunday mornings - \$10**

For more info contact Rob Miller 606-5253

## Dinner Theater Youth Fundraiser

# The Real Housewives of Cricket County

**February 12, 6:30pm, Schumann Hall**  
 Adults \$10 Kids (<10) \$5

Come and join our country cousins at a quilting party starring the More Mature Characters of FPC!



Quilt drawing - \$5/ticket  
 Winner to be announced at the dinner

Show and Quilt tickets available Sunday mornings in the church corridor

Tickets are going fast! Get yours early!

## New Member Classes



**First Connections**  
**February 12, 19, & 26**  
**9:00-10:15 am, Mornhinweg Center**

New member classes will be held on Sunday mornings for those interested in learning more about First Protestant Church. The classes offer an opportunity to meet with our ministers, ask questions and find out why we do things the way we do. No pressure, just a chance to become informed and allow us to know you better. Contact Mae Kraft at 608-0971, 609-7729 X33, or mkraft@firstprotestant.com.

## Missionary of the Month

**Robbie & Danielle Hetland**

The Hetlands have been serving in Southeast Asia over the last few years. They initially were launched out, by Antioch Community Church based in Waco, to Indonesia, primarily for language learning purposes. After that, they moved to Malaysia with a focus of church planting among the majority people group. Robbie then collaborated with National Leaders and International Partners in the practice and training of the spread of the Gospel. They are currently living in the US as they seek medical treatment for Danielle.



Danielle grew up in FPC with her sister Kristen and parents, Keith and Cindy Mitchell. She (and Keith and Cindy) went on several mission trips with the FPC youth in 1997, 1998, and 1999. Patty Westbrook (fellow congregant & Sunday nursery volunteer) and Cynthia Riffe (FPC staff) are her aunts. Her grandparents, Archie and Elrine Schmidt, are also members of FPC. Danielle met Robbie while in college at Baylor University. Upon graduation, they went straight into the missions field. Please remember the Hetlands in this uncertain time of transition for their family.

## More Missions Updates

Please remember your non-perishable food items for SOS Food Bank & diapers for Options for Women

**FPC Monthly goal: 500 lbs food, 50 pkgs diapers**  
 Collected in January 369.5 lbs of food

## Mark Your Calendars!

All presenting donors receive:

• a satisfying feeling of saving lives

• a mini-physical

• points towards

Wellness Rewards or a **STOP & GIVE** T-shirt

Redeemable online

## Blood Drive

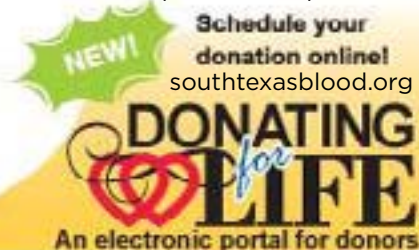
**Sunday, February 26**  
**8:45am - 12:45pm**  
**FPC Outreach Center**  
 FPC goal - 27 units

For info contact  
 Shawn Norman-Wimberley  
 832-741-7580

Donor requirements:  
 16 years old, at least 120 lbs (with parental consent), or at least 17 years weighing 110 lbs; good general health; photo ID required



is a national blood drive campaign honoring anyone affected by motor vehicle accidents



## Today is Scout Recognition Day

"A Scout is Reverent" The Boy Scouts of America (BSA) annually designates the Sunday before February 8 (Scouting Anniversary Day) as Scout Sunday. Pack 133 & Troop 133 are attending services at FPC to show appreciation to their sponsor\* and to celebrate the anniversary of scouting. FPC will recognize the scouts during the 10:30 traditional service.

(\*Since their inception, the Troop and Pack have been sponsored by FPC, originally as Boy Scout Troop 106 in 1920, then as Boy Scout Troop 133 in 1942, adding Cub Scout Pack 133 in 1975.)

This year the BSA celebrates 102 years of scouting. Visit [www.scouting.org](http://www.scouting.org)

## Women

### Women's Fellowship

**Monday, February 6, 1:30pm - Mornhinweg Center**  
 A planning meeting, hosted by FPC and Faith UCC, will be held for the Church Women of Comal County (CWCC) upcoming events, including: World Day of Prayer (Mar 2), CWCC Spring Luncheon (Apr 14), and World Community Day (Nov). FPC is hosting World Day of Prayer and will need volunteers in a number of roles. If you are unable to attend the planning meeting, but wish to help, please call Gay at 830-625-8883.

**Monday, February 13, 1:30pm - Mornhinweg Center**  
 All Women of FPC are invited to attend Women's Fellowship monthly meeting, devotional and fellowship.

### Ladies' Lunch Bunch

**Tuesday, February 7, 11:30am - Montana Mike's**  
 All ladies of the church welcome. For info call Judy Borger at 830-629-1859.

## Other Items to Note

### Super Bowl Subs

If you ordered Super Bowl Sub sandwiches, you will want to remember to pick those up **TODAY** in the church corridor after services!

**"Not Over the Hill Yet" Gang**  
 Gentlemen, take note, Ryan's Restaurant has closed. **The NOTHY Gang will meet February 8 at Golden Corral instead.** See you there!

### 2012 Radio Sponsorship

Sponsorships are still available for 2012 and may be requested at 830-609-7729 x10 or online at [www.firstprotestant.com](http://www.firstprotestant.com).

### FPC Walk of Faith

If there is someone you wish to remember or honor, we invite you to consider a brick or paver on our church campus. For more info, please contact Jerald Schroeder at 609-7729 x19.

### FPC Grocery Tote Bags

FPC grocery tote bags are available in the church corridor or church office and may be purchased for \$2/each or 3/\$5.